



# GMT MONTHLY MEMBERSHIP PROGRESS REPORT

Results as of: 5/31/2020

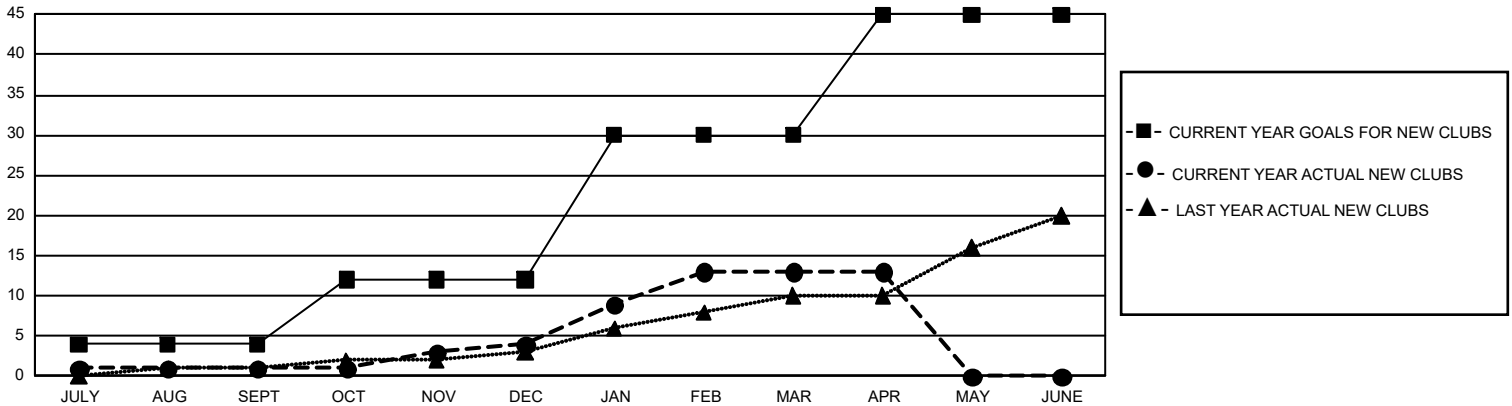
## GMT Constitutional Area 4, Group E

GMT: OPEN

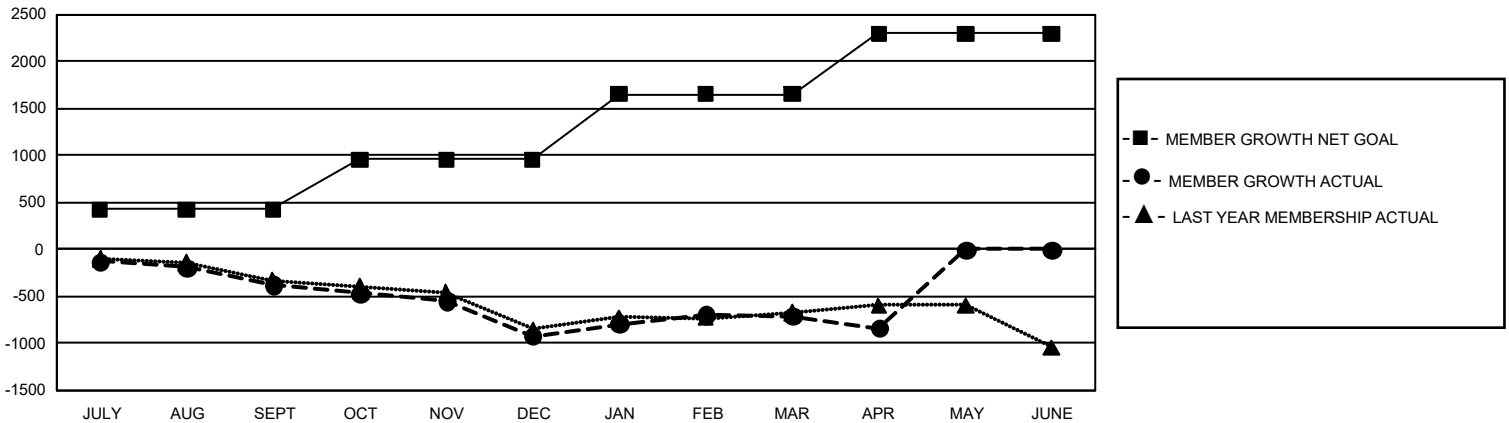
REPORT DOES NOT INCLUDE CLUBS IN UNDISTRICTED AREAS.

Clubs				Members			
RESULTS FOR 2019-2020				RESULTS FOR 2019-2020			
QUARTER	NEW CLUB GOAL	NEW CLUBS	DROPPED CLUBS	QUARTER	MEMBER GROWTH NET GOAL	MEMBER GROWTH ACTUAL	DROPPED MEMBERS ACTUAL (including transfers)
JULY/AUG/SEPT	12	1	11	JULY/AUG/SEPT	1,284	530	796
OCT/NOV/DEC	24	3	7	OCT/NOV/DEC	1,599	678	1,094
JAN/FEB/MAR	54	9	6	JAN/FEB/MAR	2,079	1,010	676
APR/MAY/JUNE	45	0	0	APR/MAY/JUNE	1,935	94	205

**GOALS AND ACTUAL NEW CLUBS CUMULATIVE**



**GOALS AND ACTUAL MEMBERS CUMULATIVE**



DROPPED CLUBS: 24	853 CLUBS OF 1,786 ADDED 1 OR MORE NEW MEMBERS	<b>GENDER DISTRIBUTION</b>
<b>DROPPED MEMBERS</b>	<a href="#">CLICK HERE FOR CUMULATIVE MEMBERSHIP DATA</a>	MALE            30,007 (75.80%)
DECEASED            369		FEMALE        9,580 (24.20%)
CLUB CANCELLED     37		TOTAL FAMILY UNIT MEMBERS            1,327
OTHER                 2,364		FAMILY MEMBERS PAYING HALF DUES            673
<b>TOTAL                 2,770</b>		